



## Interior Amenities

- Spacious Floorplans
- Large Walk-in Closets
- All Electric Appliances
- Large Utility Rooms with Interior Storage\*
- Washer and Dryer Connections\*
- Cozy Wood Burning Fireplaces\*
- Pass Through Bars
- Ceiling Fans
- Solar Screens in all Apartments

## Community Features

- Swimming Pool with Sun Deck
- Fully Equipped Play Area
- Private Patios and Balconies
- Clothes Care Center
- Package Pick up at Office
- Professional On-site Management
- 24 Hour Emergency Maintenance

**Willow Glen** offers one, two, and three bedroom apartment homes. Convenient to downtown Fort Worth. A professional management team that ensures resident satisfaction. Little touches like a fully equipped play area for the little ones. You'll find all this and more at Willow Glen. At Willow Glen, we've created living spaces to fit your needs. Large walk-in closets and roomy utility rooms make living convenient. All electric appliances and full-size washer and dryer connections make it easier. Professional management and exceptional service technicians are what you'll experience when you live at Willow Glen Apartments. Willow Glen is located in the prestigious Crowley School District. Plus you'll live conveniently near IH-35 and I-20, just minutes from major employers, shopping centers and downtown.



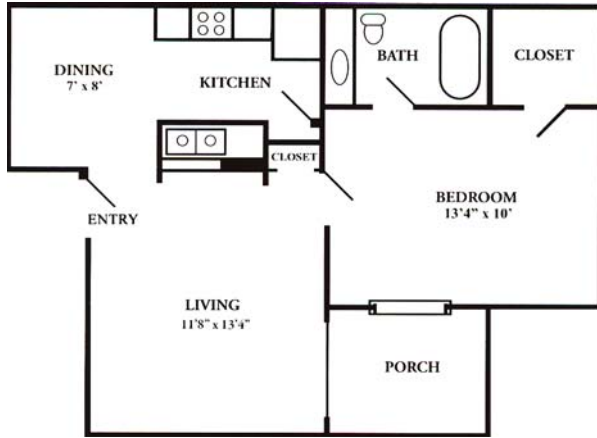
*Willow*  
*Glen*  
apartment  
homes



\*In Select Apartment Homes



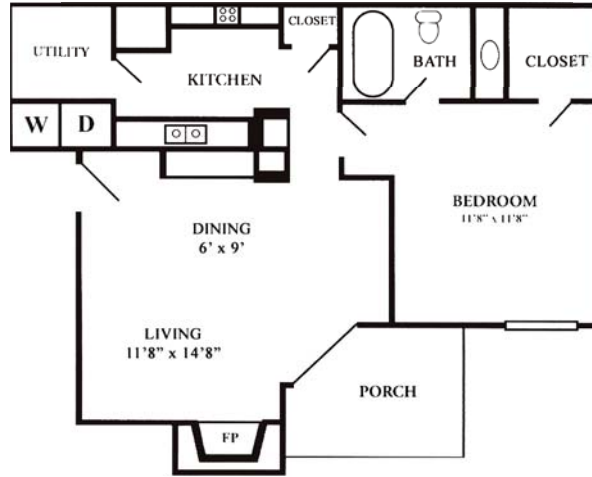
1301 Sycamore School Road  
Fort Worth, TX 76134  
**Office: 817.551.9231**  
Fax: 817.551.5753  
liveatwillowglen.com



1 Bdrm / 1 Bath 530 Sq. Ft.

**RENT** \_\_\_\_\_

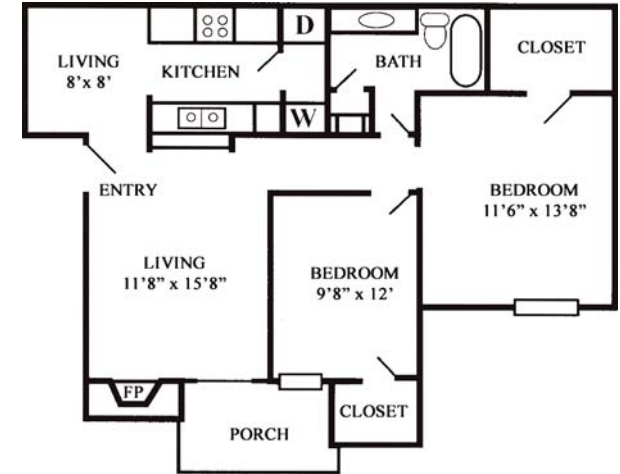
**DEPOSIT** \_\_\_\_\_



1 Bdrm / 1 Bath 660 Sq. Ft.

**RENT** \_\_\_\_\_

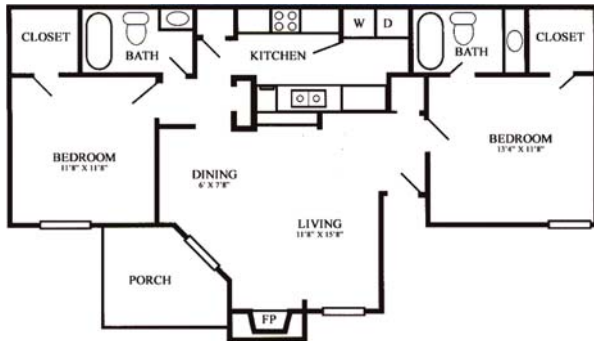
**DEPOSIT** \_\_\_\_\_



2 Bdrm / 1 Bath 855 Sq. Ft.

**RENT** \_\_\_\_\_

**DEPOSIT** \_\_\_\_\_



2 Bdrm / 2 Bath 950 Sq. Ft.

**RENT** \_\_\_\_\_

**DEPOSIT** \_\_\_\_\_



1301 Sycamore School Road  
Fort Worth, TX 76134  
**Office: 817.551.9231**  
Fax: 817.551.5753

Professionally Managed by  
**MONTICELLO**  
ASSET MANAGEMENT, INC.



3 Bdrm / 2 Bath 1050 Sq. Ft.

**RENT** \_\_\_\_\_

**DEPOSIT** \_\_\_\_\_

\*Square footage is approximate Actual floorplans may vary

liveatwillowglen.com